

# Neurofax

Electroencephalograph  
EEG-1250

Save lives with aEEG monitoring in the ICU/NICU



*Fighting Disease with Electronics*

 **NIHON KOHDEN**

# EEG monitoring in the ICU/NICU

The space-saving EEG-1250 provides continuous EEG monitoring in the ICU/NICU for critical patients.

The optional EEG trend program (aEEG) allows even non-neurologists to recognize at a glance abnormal brain function such as brain seizures which cannot be detected in the vital sign data of HR, SpO<sub>2</sub> and CO<sub>2</sub>.

EEG monitoring in the ICU/NICU enables more timely life-saving treatment.

## Vital sign data plus EEG on one screen

The JE-921A junction box has an SpO<sub>2</sub>/ETCO<sub>2</sub> connector and accepts analog input signals from a patient monitor. This lets you monitor EEG and vital sign data together on the same screen.

## Easy to use

The large touch panel provides intuitive operation. The height of the cart can also be adjusted for best angle monitoring. The stylish design fits in the limited space in an ICU/NICU.

## Remote monitoring with Neuroworkbench®

The Neuroworkbench® data management software provides remote monitoring function. This helps ICU/NICU doctors because the ICU/NICU doctors cannot always diagnose EEG waveforms and the neurologist is not always present in the ICU/NICU.

Remote monitoring lets the neurologist diagnose the EEG from another part of the hospital.



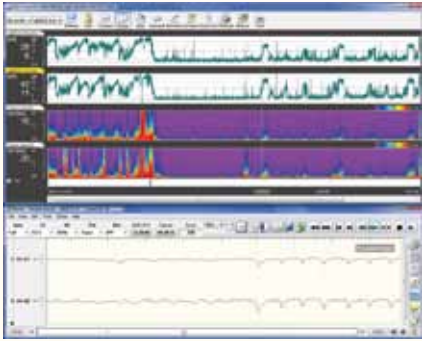
With options



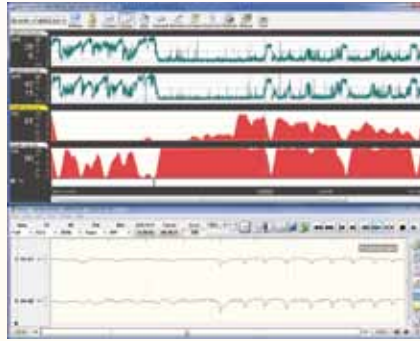
## ■ aEEG

Quantitative analysis such as aEEG, DSA and burst suppression reveals trends in EEG waveforms.

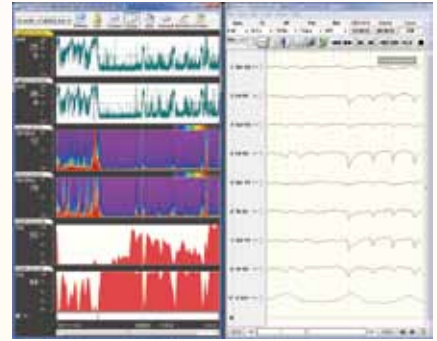
With optional trend program, QP-160A



aEEG, DSA and waveforms



aEEG, burst suppression and waveforms



Vertical split screen

## ■ Synchronized digital video

You can record, save and review patient images synchronized with the EEG waveforms. This is useful for diagnosis when the patient has a seizure. Video clip and snapshot function are available.

(requires optional QP-110AK digital video software and QI-120A camera capture unit)



## ■ Shielded electrodes

The shielded BE-911A/912A EEG electrode cable (option) reduces noise and improves stable EEG monitoring.



## ■ Mini junction box

The JE-922A mini junction box (option) can be extended up to 5 m from the main junction box.



## ■ All-in-one junction box

The 10-20 system JE-921A junction box integrates 32 channel EEG input and provides the highest signal quality and maximum reliability. It also provides SpO<sub>2</sub>/ETCO<sub>2</sub> inputs and 4 channels DC input.



## Options

- Trend program, QP-160A
- Mini electrode junction box, JE-922A
- Camera capture unit, QI-120A
- Digital video software, QP-110AK
- Cart, KC-125A

## Electrodes and Sensors

- ECG clip-on limb electrode, Fastclip H068A
- ECG electrode lead, BC-112B K512A
- EEG disk electrode (shielded type), BE-911A, 24 electrode leads
- EEG disk electrode (shielded type), BE-912A, 12 electrode leads



SpO<sub>2</sub> adapter, JL-550T2 Y095A



CO<sub>2</sub> sensor kit, TG-921T3 P908



SpO<sub>2</sub> probe (for neonate/adult, disposable), TL-273T P203C



Multi-site Y probe, TL-260T P205A

## System Composition

- CC-125A PC unit
- JE-921A electrode junction box
- KC-125A cart

## Related Product



Electroencephalograph  
EEG-1200J/K

## Related Literature



The aEEG Booklet

Neuroworkbench is a registered trademark of Nihon Kohden Corporation.  
This brochure may be revised or replaced by Nihon Kohden at any time without notice.



NIHON KOHDEN CORPORATION

1-31-4 Nishiochiai, Shinjuku-ku, Tokyo 161-8560, Japan  
Phone +81 3-5996-8041

<https://www.nihonkohden.com/>